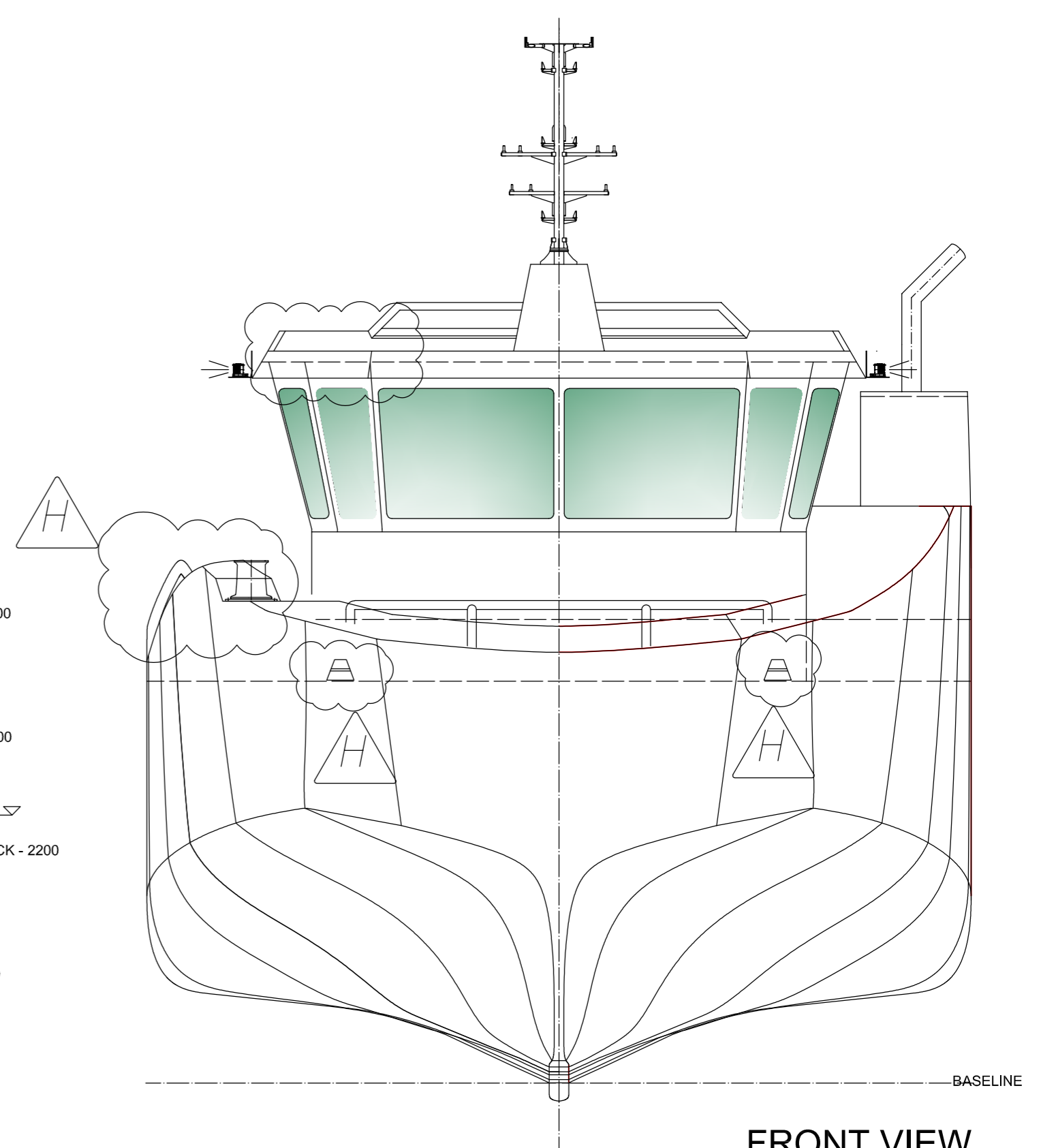
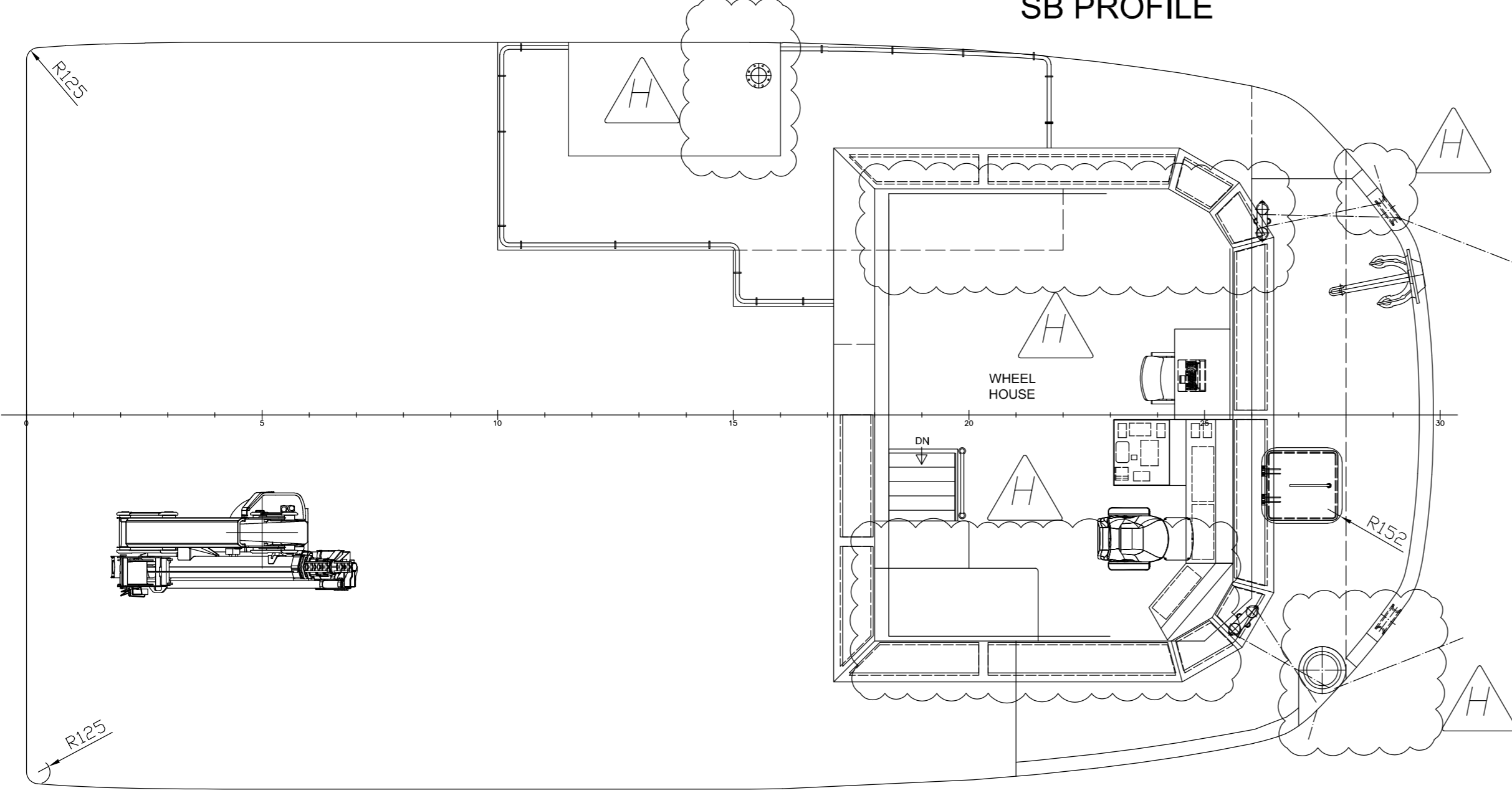


SB PROFILE

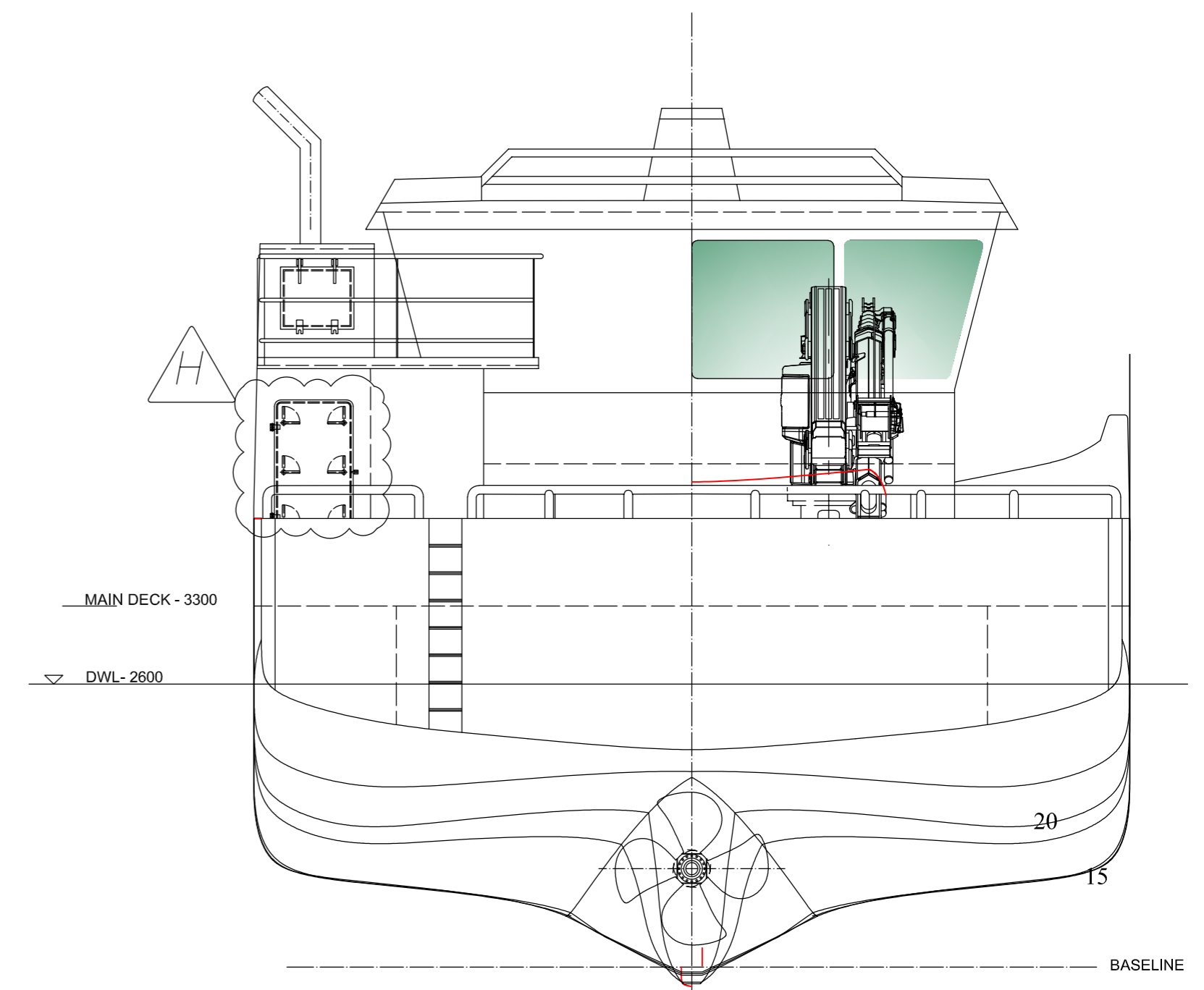
- BRIDGE DK - 4500
- MAIN DECK - 3300
- DWL - 2600
- MEZZANINE DECK - 2200
- TANKTOP - 1100
- BASELINE



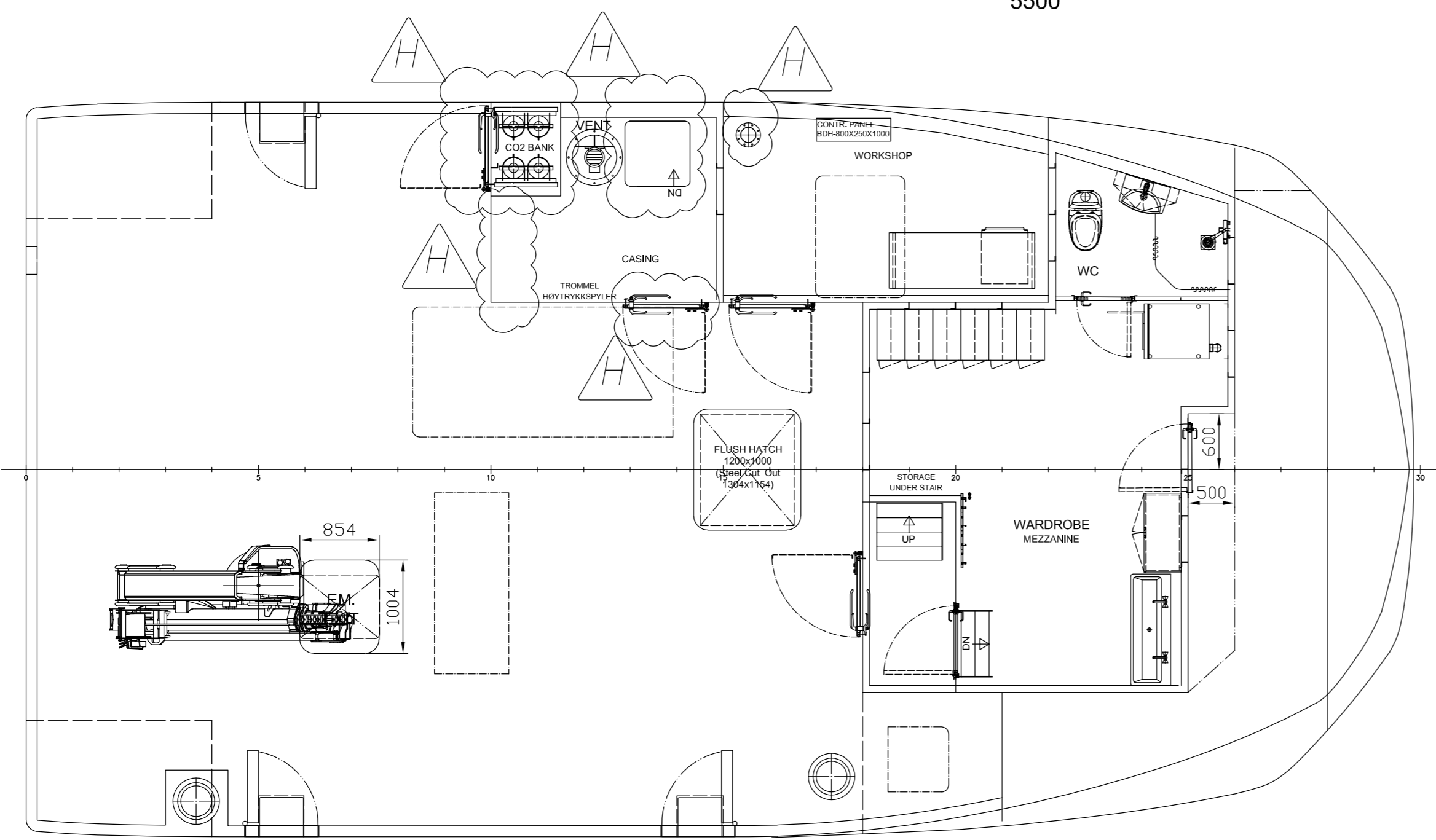
FRONT VIEW



BRIDGE DECK
5500



STERN VIEW



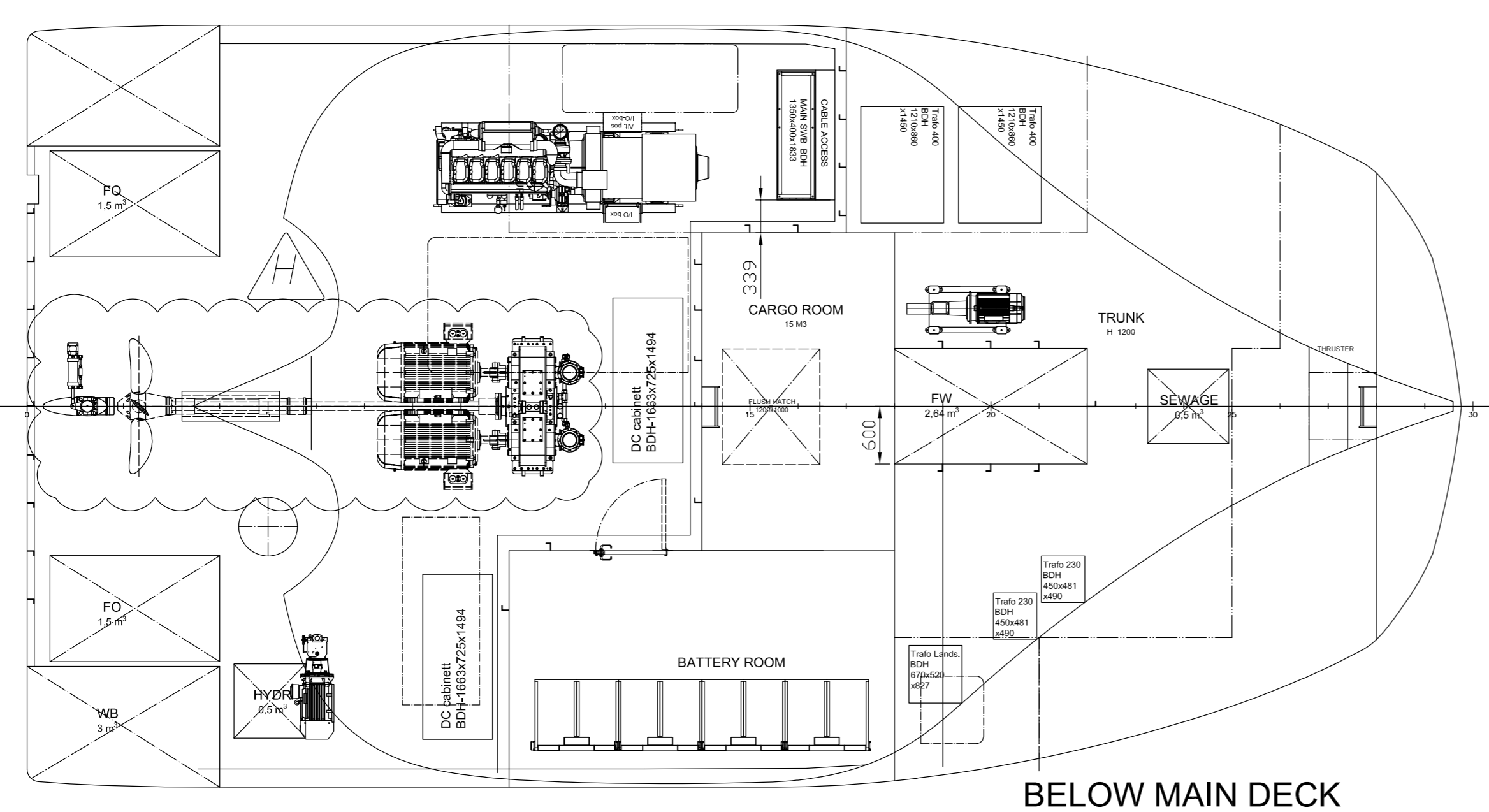
MAIN DECK
3300

MAIN PARTICULARS

LENGTH OVER ALL (LOA)	:	14,90 m
LENGTH BETWEEN P.P. (LPP)	:	14,50 m
BREADTH MLD	:	8,00 m
DEPTH TO MAIN DECK	:	3,30 m
DEPTH TO DESIGN WL	:	2,60 m
FRAME SPACING	:	0,50 m

CAPACITIES

BATTERY PACK	:	541 KWh
FUEL OIL	:	3,0 m ³
FRESH WATER	:	3,0 m ³
WATER BALLAST	:	16 m ³
SEWAGE TANK	:	0,5 m ³



BELOW MAIN DECK
1000

H	Folla request 06.02.2023	07.02.2023	NK				
C	FOR PRODUCTION	20.10.22	VJ	D	New lines&Hatches, various updates	10.01.2023	NK
A	FOR COMMENTS	24.06.22	VJ	B	CHANGES TO COMMENTS	14.07.22	VJ
REV	ALTERATIONS	DATE	SIGN.	REV	ALTERATIONS	DATE	SIGN.
YARD NO/NAME		BLOCK		CLIENT (NAME/LOGO)			
YARD No.93 FOLLA MARITIME							
GENERAL ARRANGEMENT							
FOLLA POWER 50							
DEP.	MM PRO.	MM DWG. NO	SCALE	YARD DWG. NO			
DATE	3171	3171-101-001	1:50				
JUN22	APPR.						
DES.	CHK.	FILE	31XX-101-001	REV	SFI	101	
VJ				H			
more maritime				Dolegaten 137 N-6516 Kristiansund, Norway Tel.: +47 74 58 30 00 E-mail: post@moremaritime.com			
REV APPROVED BY				SHEET 1/1 FORMAT			
				TO REPLACE			
				REPLACED BY			
				INFO			

ALL RIGHTS RESERVED!
This drawing is the property of More Maritime AS.
It may not be copied or forwarded to any third party without our written consent.
The receipt of this drawing implies that the above conditions are accepted.